



E-BOOK

SHUPACK

URETHANE PAD MATERIAL



GLUE-U.COM

Glue-U Adhesives is a Dutch company making innovative products for farriers and horses since 2006. Following our philosophy **“TOGETHER WE TAKE CARE OF YOUR HORSE”** we designed special adhesives to glue any kind of horseshoes, acid free silicones and very fast urethane pads for any purpose. All Glue-U products are Dutch engineered and manufactured both in Europe and USA: same quality, same performance.

**“HARNESS THE
STRENGTH OF
URETHANE PAD
MATERIAL FOR
SUPERIOR ADHESION
TO THE SOLE.”**





WHAT IS SHUPACK?

INTRODUCTION

Welcome to the forefront of equine hoof care innovation! This e-book delves into the transformative world of urethane pad materials designed to provide unparalleled support, cushioning, and protection for horses dealing with foundered and laminitic cases. With two distinctive durometers, A30 Soft and A50 Regular or CS, this cutting-edge pad material can be seamlessly applied using standard caulking guns and 250cc cartridges, making it a game-changer in the field.

SHUPACK PRODUCT LINE

Support | Protection | Shock absorption | Quick setting time: approx 35 sec | No pads needed
CS aids in thrush prevention



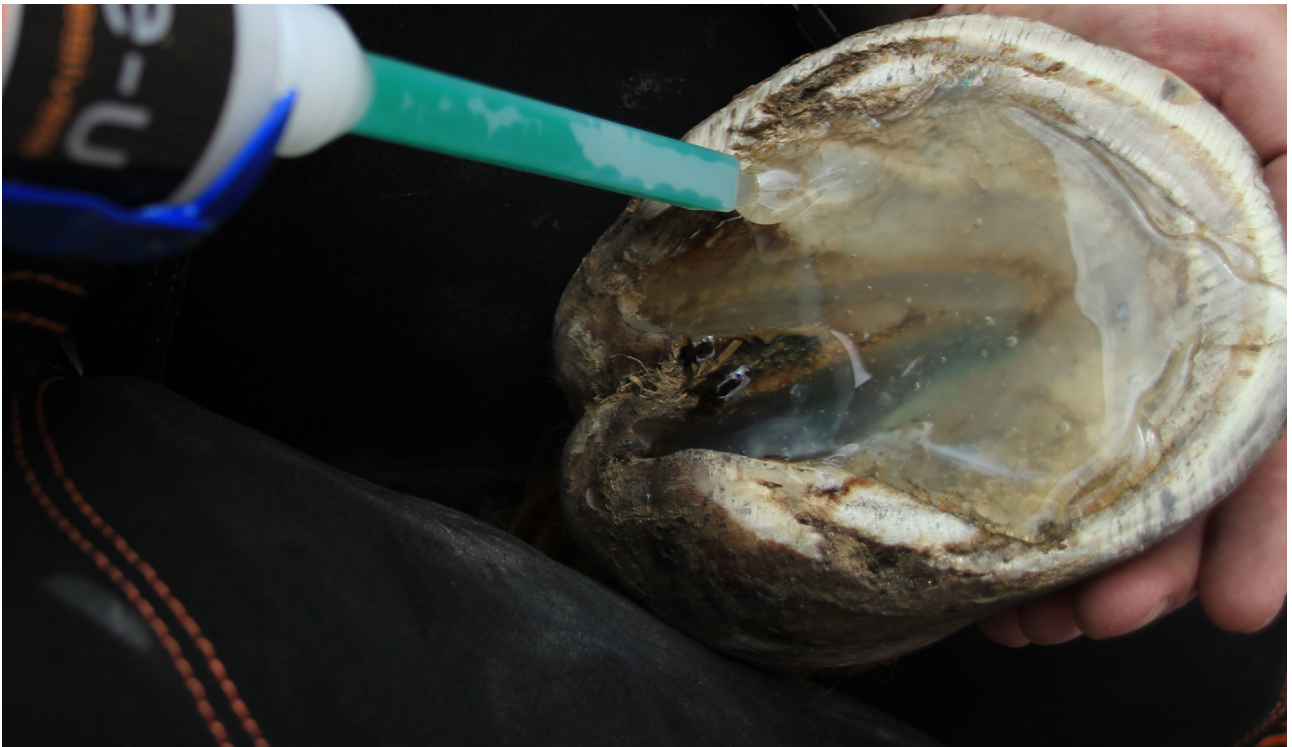
200130250



200150250



200152250



FEATURES

ALL ABOUT SHUPACK

The dual durometer options, A30 Soft and A50 Regular or CS, cater to varying degrees of firmness, allowing practitioners to tailor their approach based on individual horse needs. The A30 Soft variant provides a gentle and accommodating cushion, while the A50 Regular or CS variant offers a firmer support for more structured cases.

One of the distinctive features of this urethane pad material is its compatibility with standard caulking guns and 250cc cartridges. This not only simplifies the application process but also makes it a cost-effective solution for farriers and veterinarians. The ability to fill up to ground level efficiently ensures proper support for foundered and laminitic cases.

For cases where pads are not utilized, the inclusion of meshes is recommended, although not mandatory. This flexibility allows practitioners to adapt the treatment based on the specific needs of the horse, ensuring a customized and effective approach to hoof care.

WHY USE SHUPACK? PERFORMANCE

The set time of approximately 35 seconds for this urethane pad material proves to be advantageous in time-sensitive situations. However, it is essential to note that temperature and humidity may influence the product's performance. Practitioners should consider these environmental factors to optimize the application process and ensure the desired results.

The soft yet firm nature of the material delivers a balanced combination of protection, cushioning, and support for the hoof sole. Its quick set time enables practitioners to work efficiently, particularly in urgent cases where immediate intervention is crucial.





EXTRA TIP

CREATING A CONCAVE SHAPE IN A FOAM PAD

When working with foam pads, it's important to ensure they are comfortable and do not create pressure points. Here's a simple but effective tip:

Step 1

Place the foam pad on the horseshoe.

Step 2

Using your thumb to create a slight concave shape. This will ensure that the pad material doesn't press directly onto the hoof or any other surface, providing a more comfortable fit.

Step 3

Check the foam pad to make sure it maintains its concave shape and adjust if necessary.

By creating a concave shape in the foam pad, you reduce the direct pressure that a flat pad might exert. This adjustment enhances comfort and helps to distribute pressure more evenly.

USE SHUPACK FOR: EXAMPLE APPLICATIONS

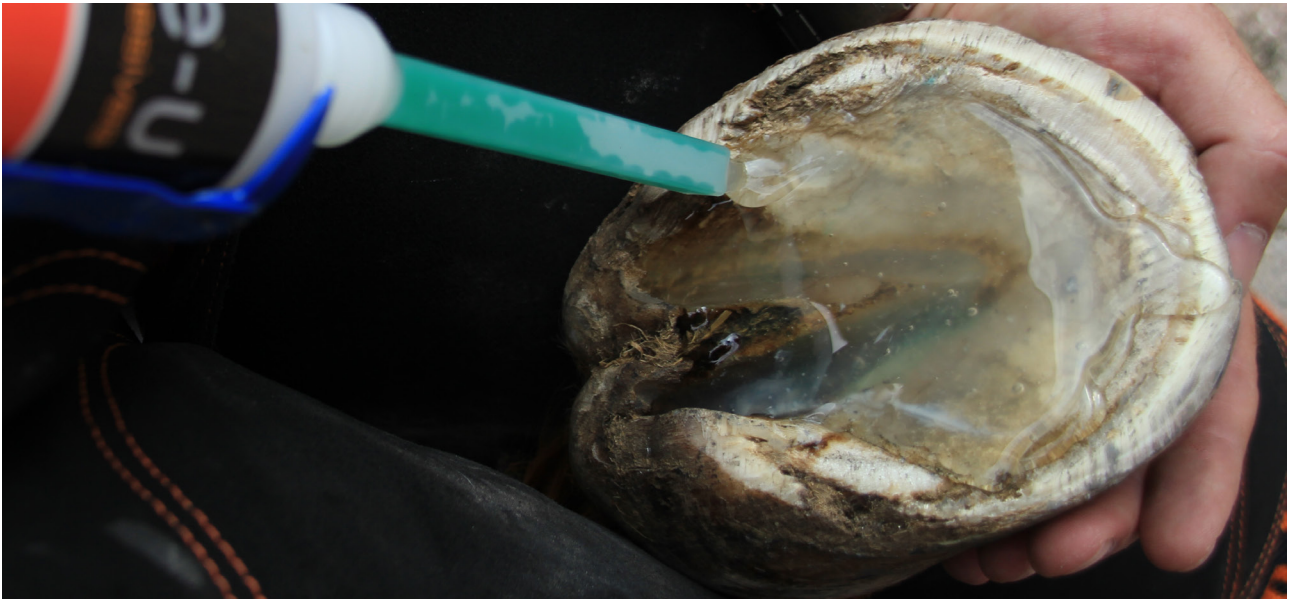


Shupack with pad.



Shupack with mesh.

USE SHUPACK FOR: EXAMPLE APPLICATIONS



Shupack on the hoof.

**“ACHIEVE SUPERIOR
HOOF SUPPORT WITH
OUR QUICK-SETTING,
URETHANE PAD
MATERIAL.”**

CONTACT GLUE-U

Glue-U USA Inc

215 Church Street
Georgetown
SC 29440 USA

Tel. 1 (816) 305-6984
Tel. 1 (770) 313-4007
E-mail: sales-us@glue-u.com
Website: www.glue-u.com

Glue-U Adhesives BV

Droogdokkeneiland 8
5026 SR Tilburg
The Netherlands

Tel. +31 (0)13 545 31 18
E-mail: sales@glue-u.com
Website: www.glue-u.com

